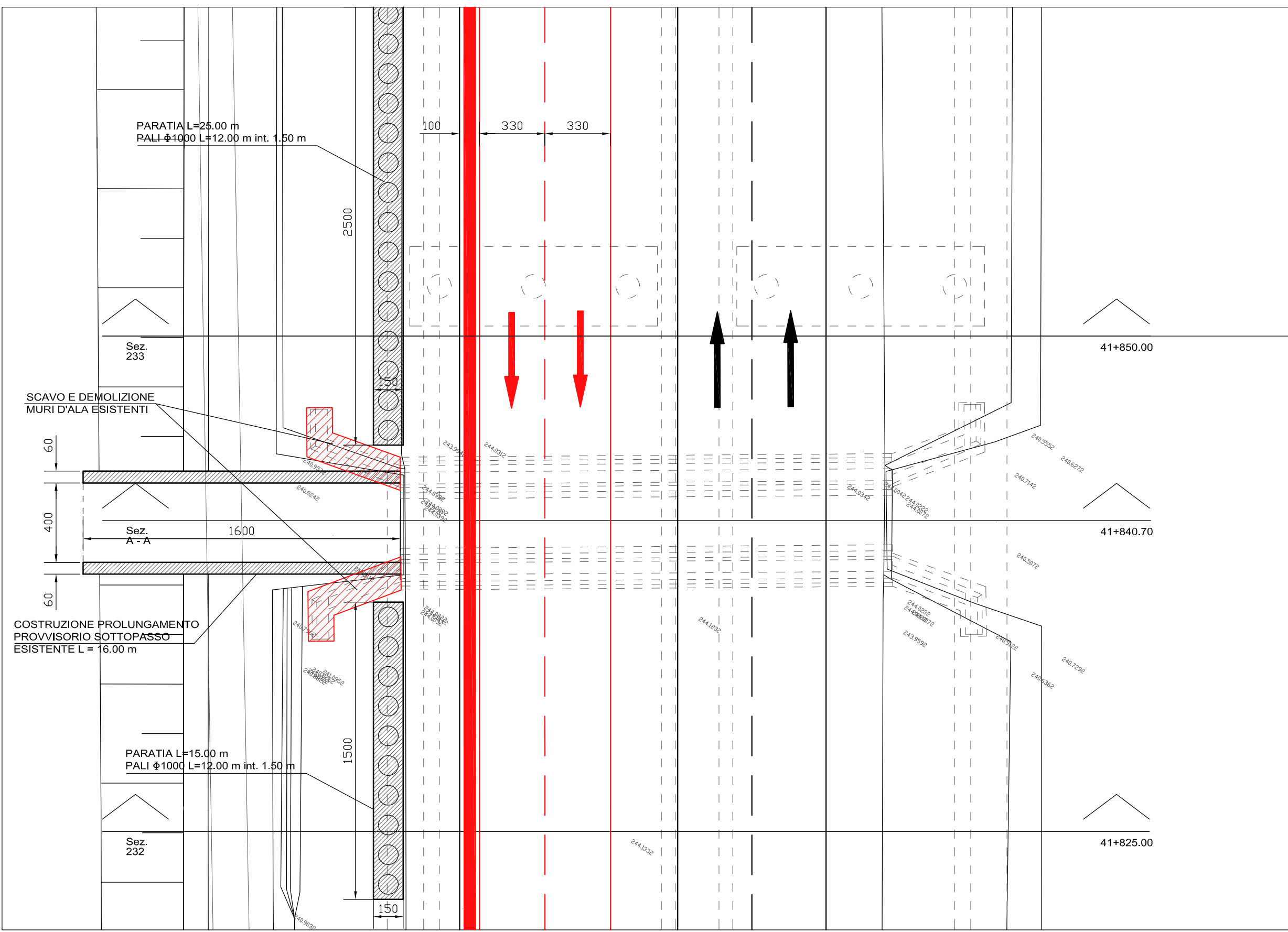
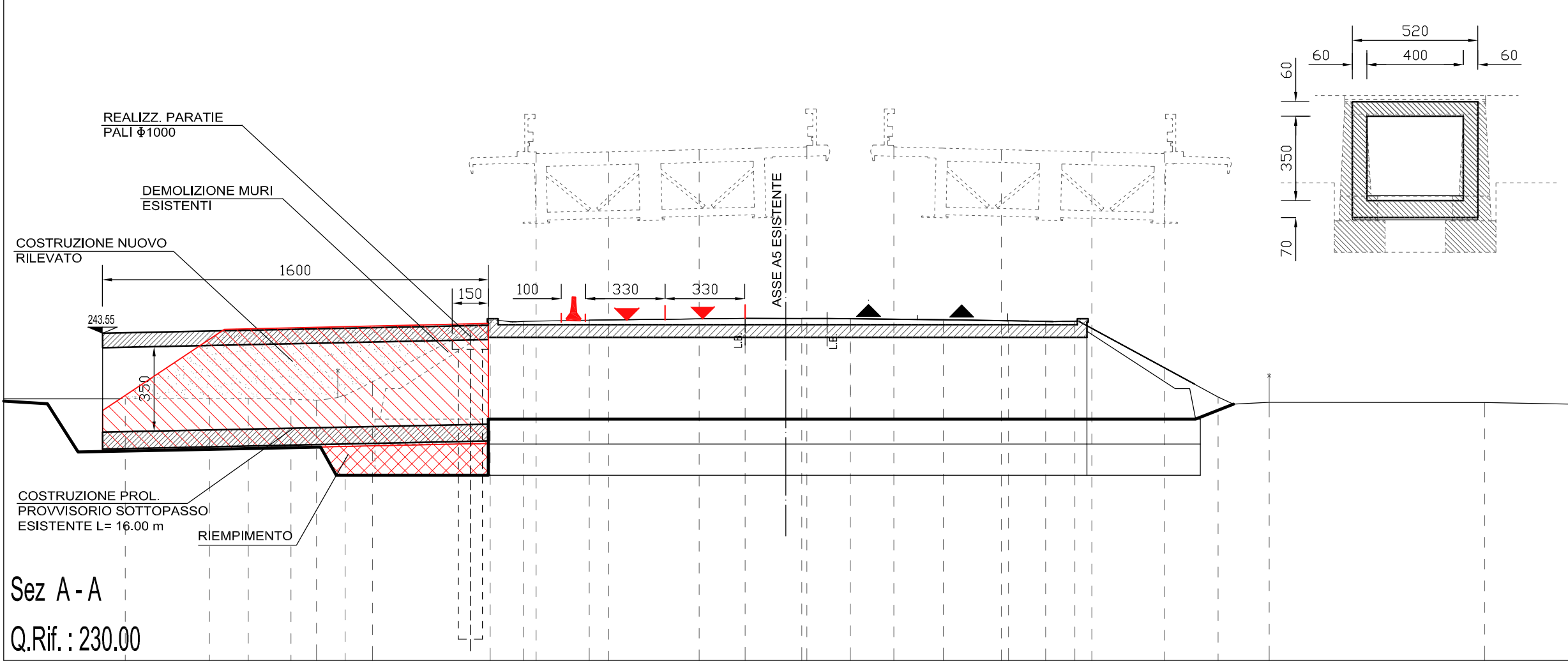


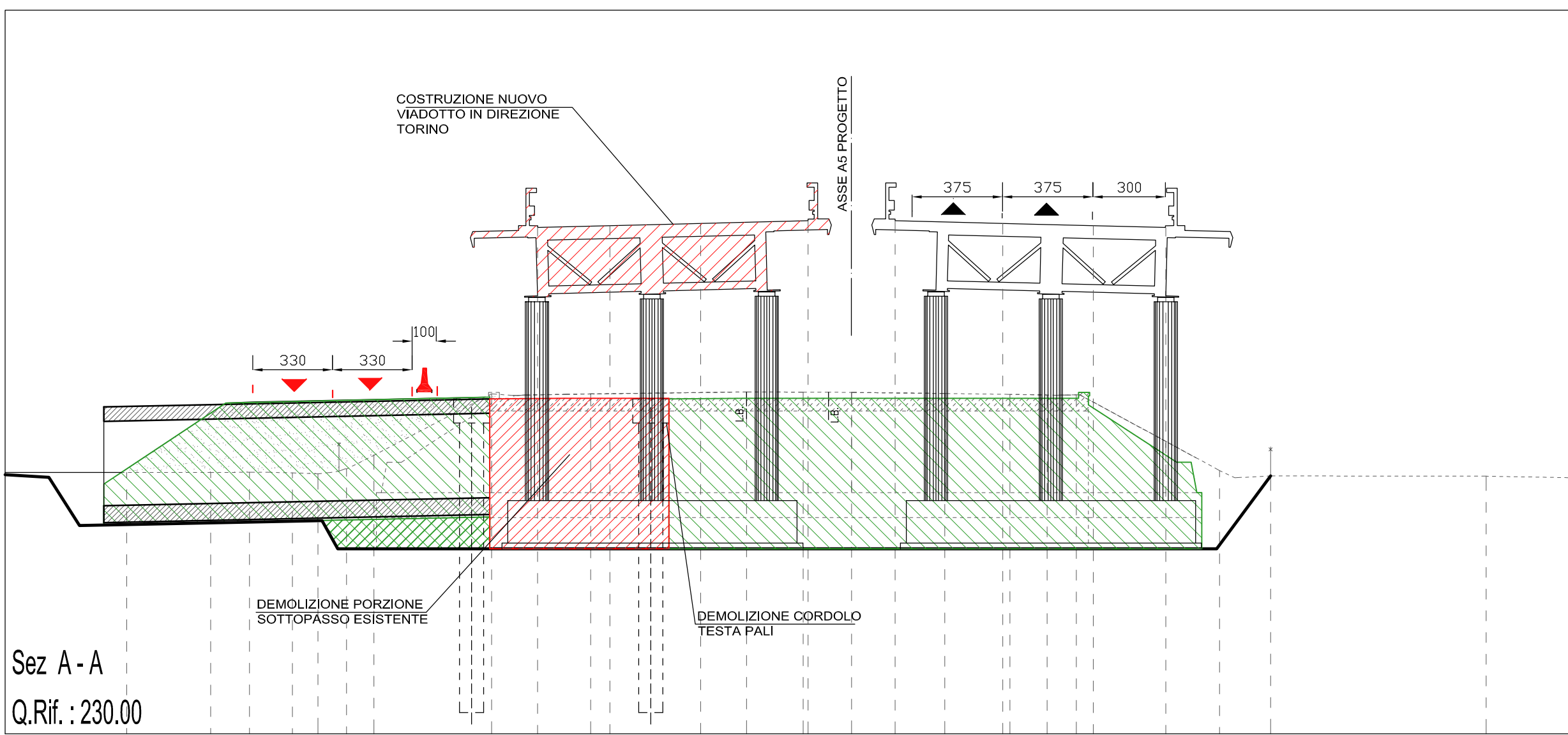
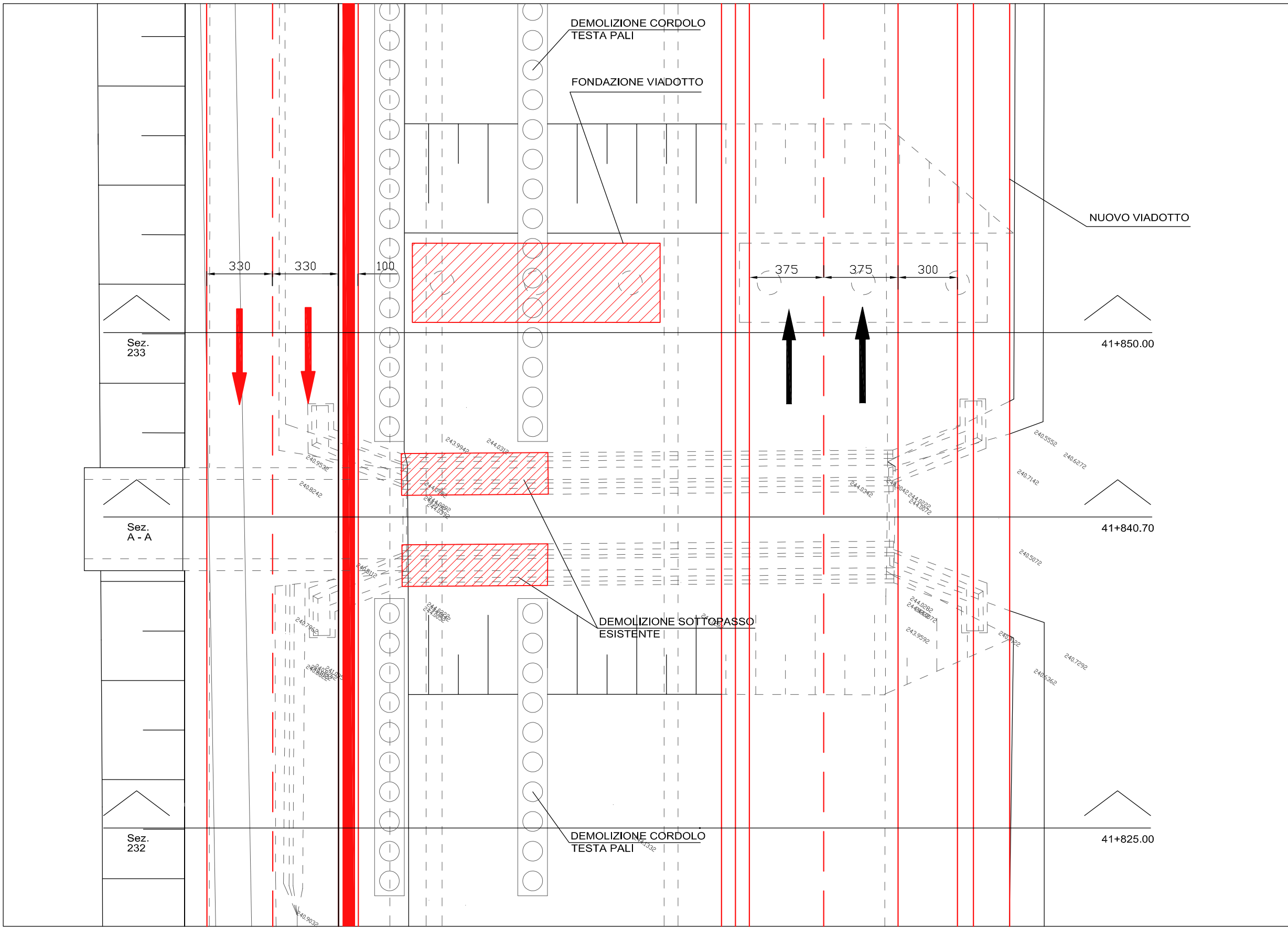
FASE 2



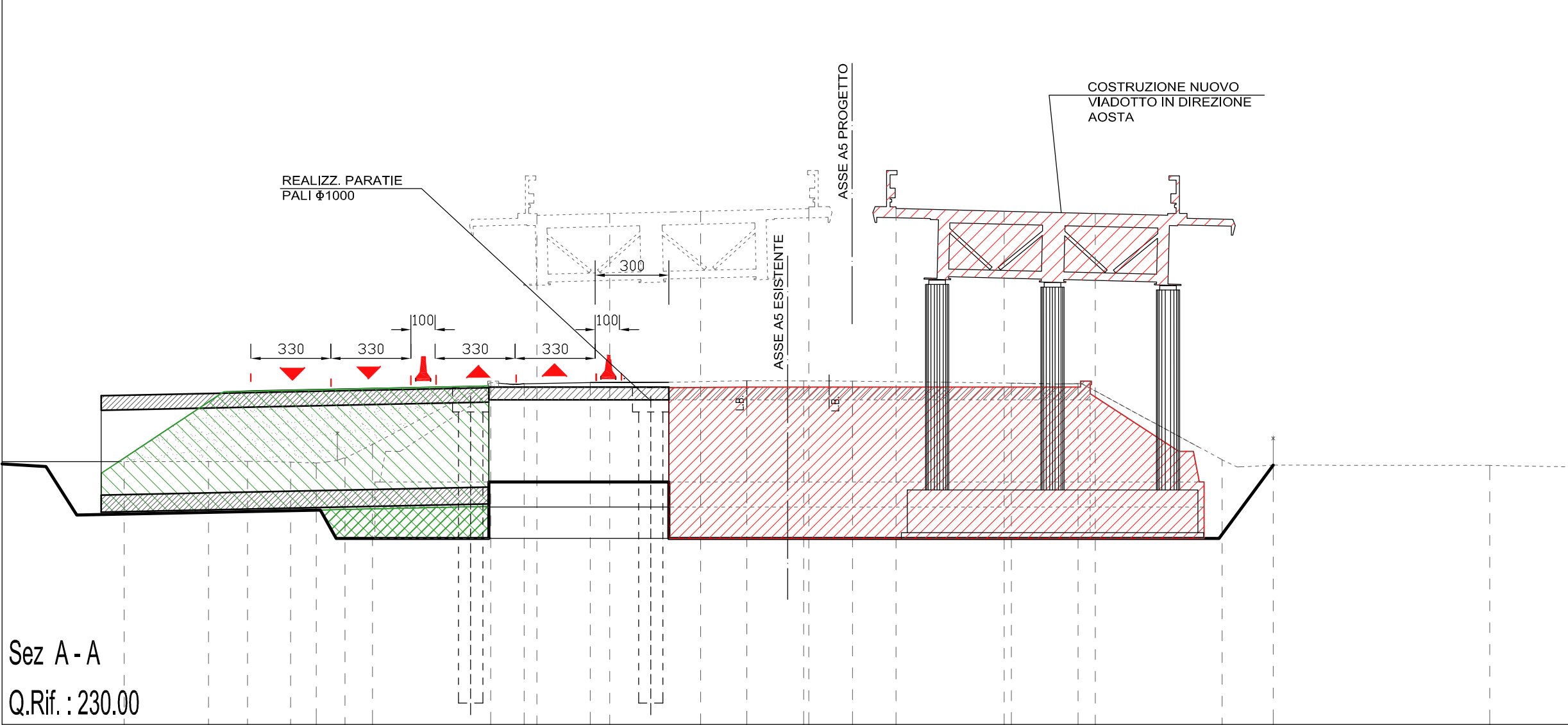
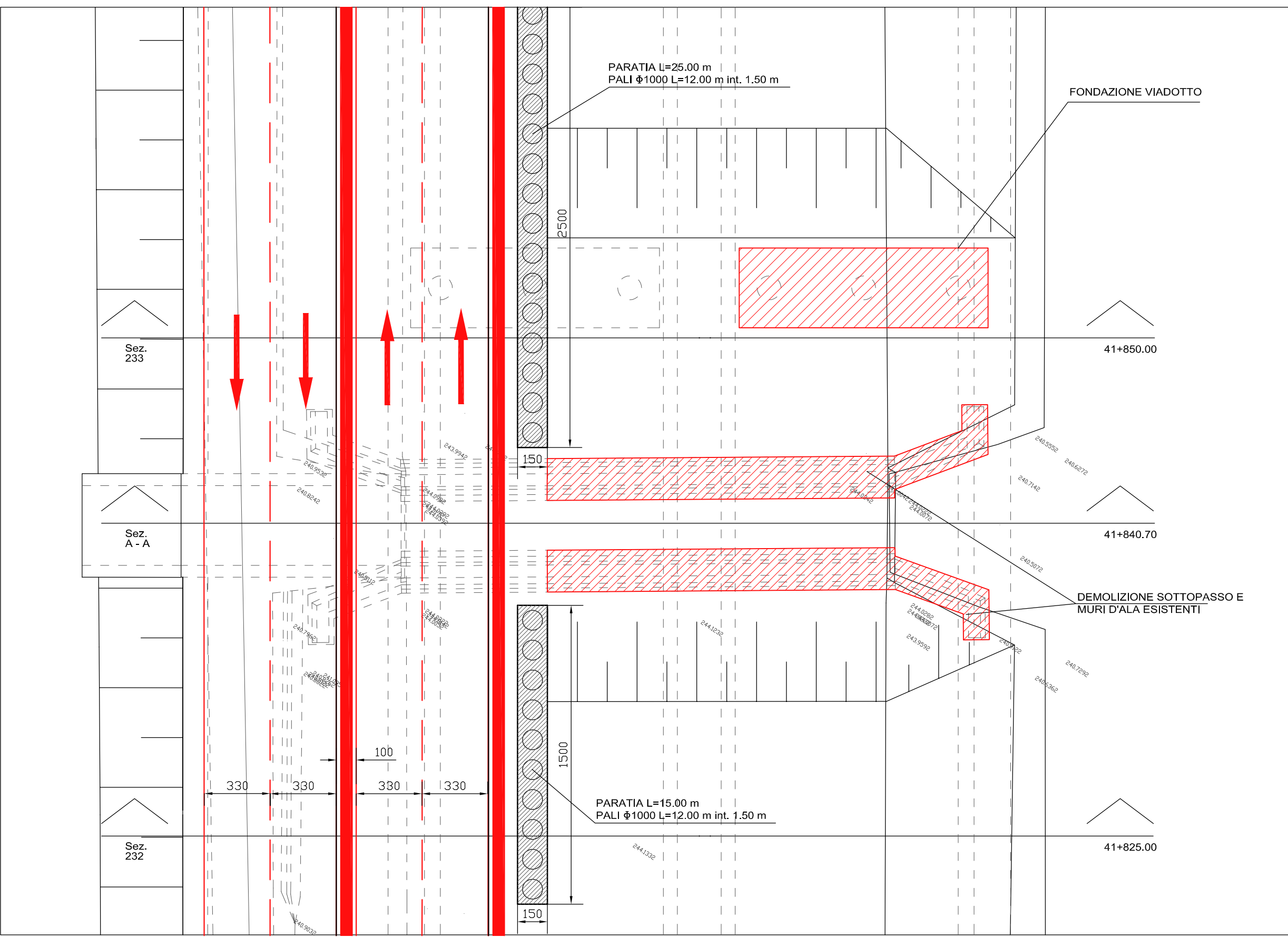
SEZIONE TRASVERSALE PROLUNGAMENTO PROVVISORIO SOTTOPASSO ESISTENTE



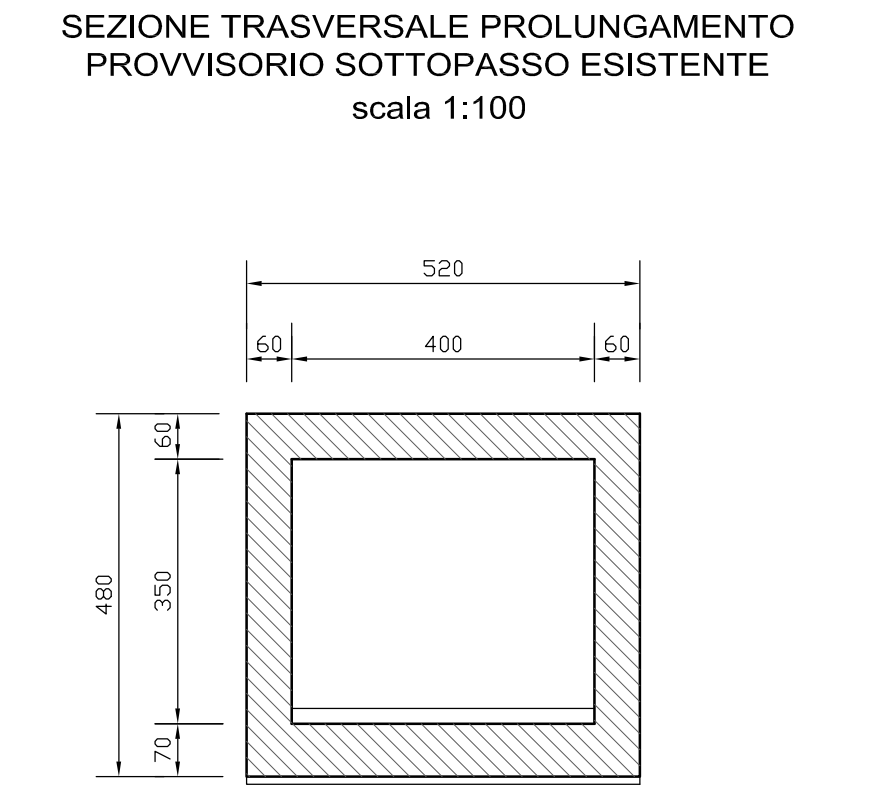
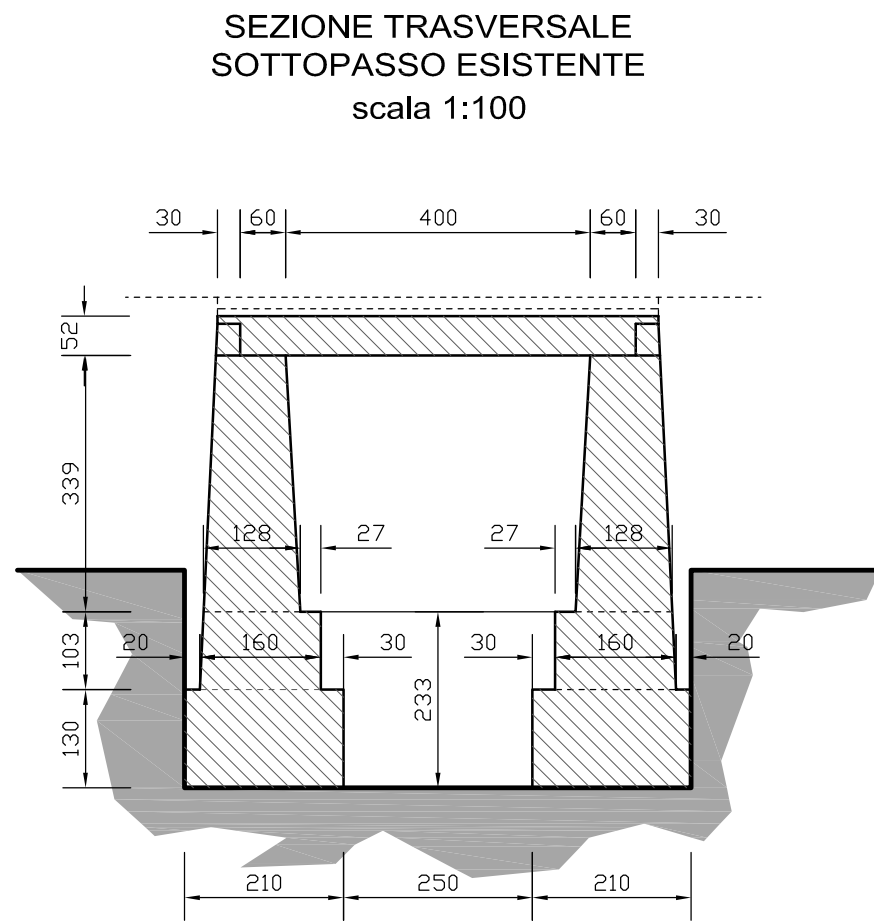
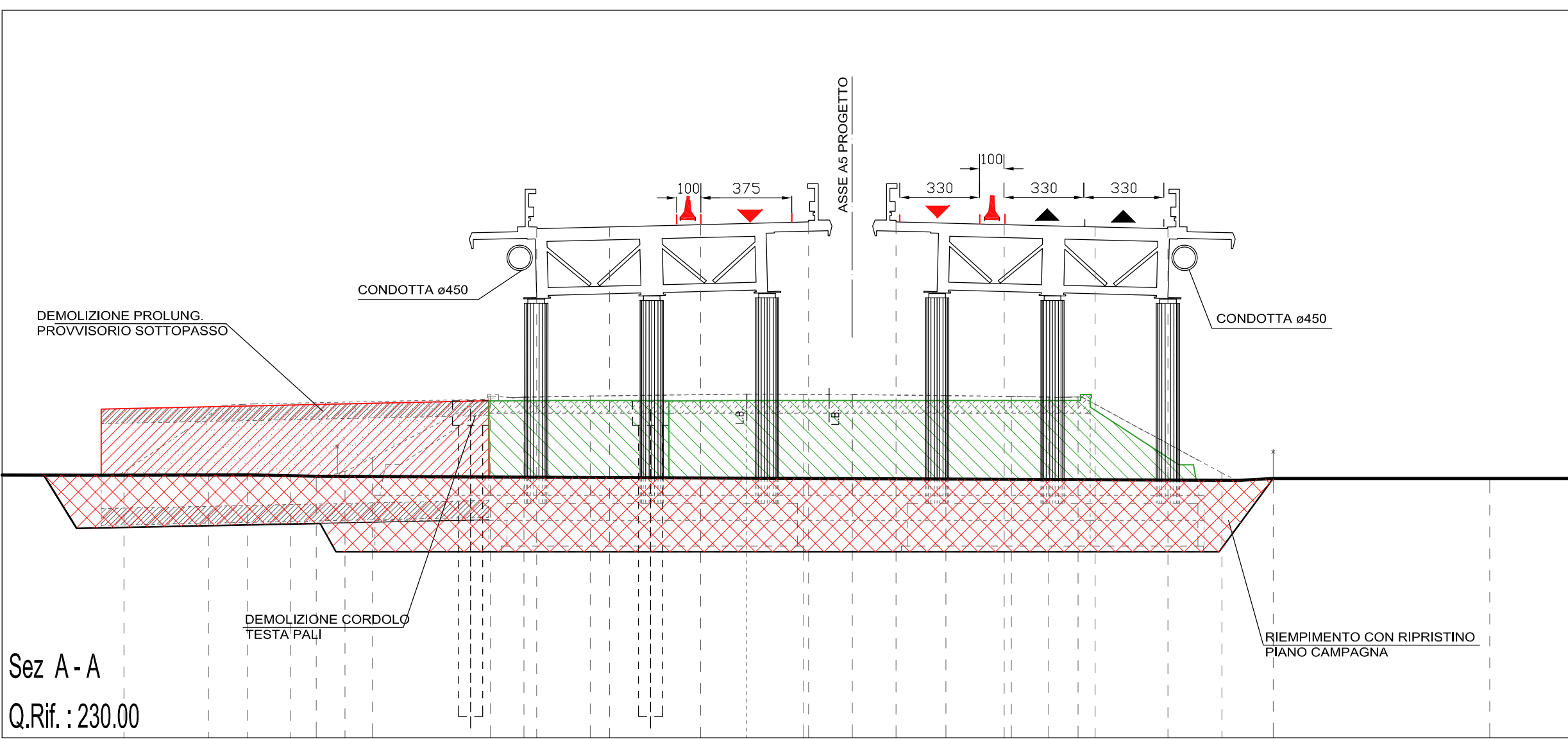
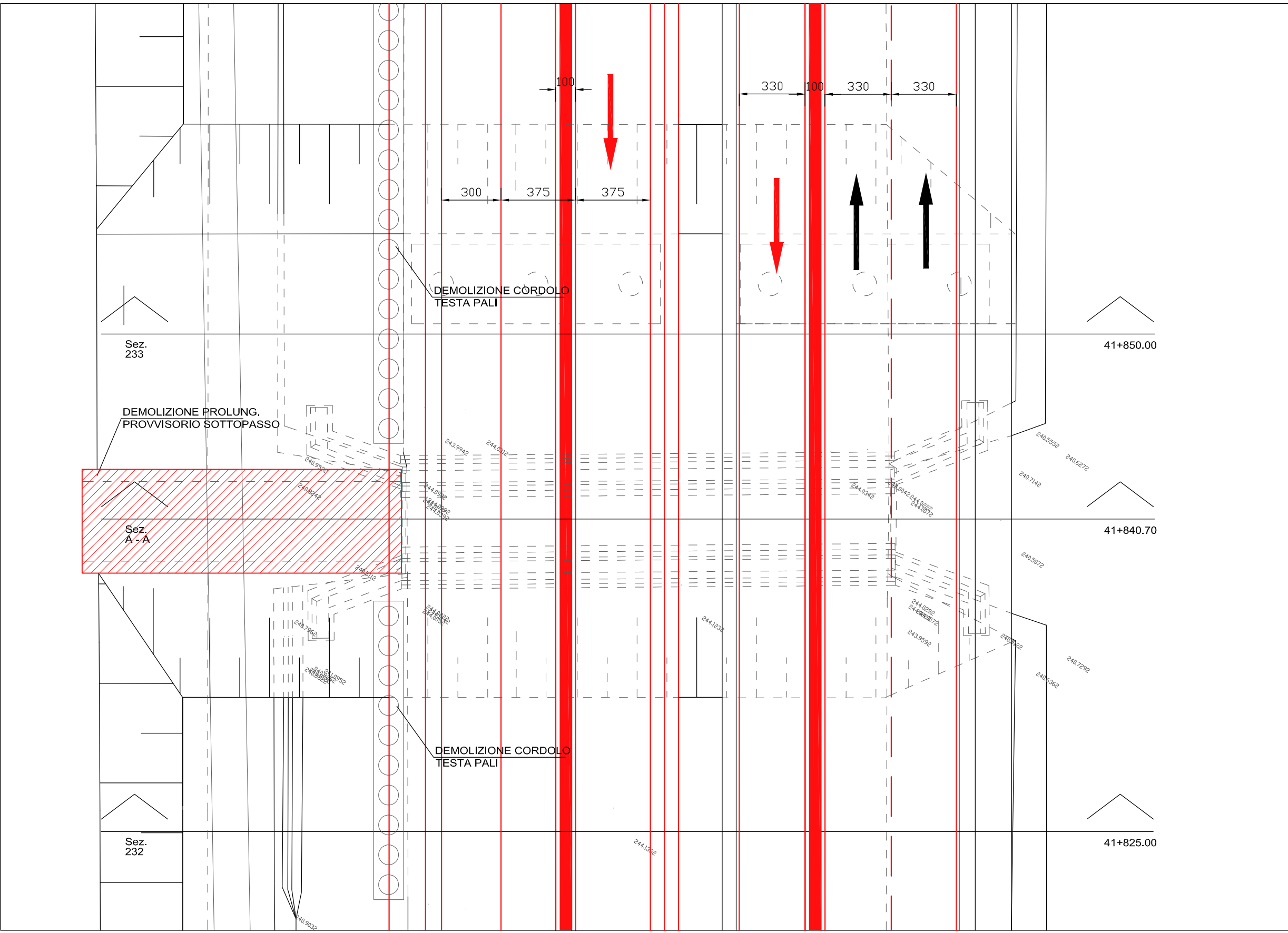
FASE 5

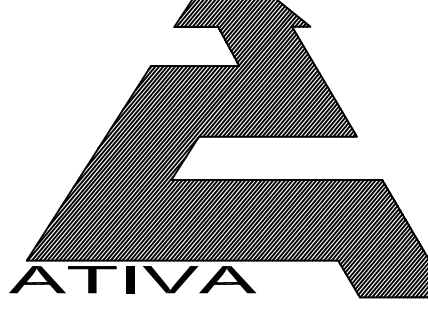


FASE 4




FASE 6





TORINO - IVREA - QUINCINETTO
IVREA - SANTHIA'
SISTEMA AUTOSTRADALE
TANGENZIALE DI TORINO



VISTO da ATIVA S.p.A.
Amministratore Delegato
Dott. Ing. LUIGI CRESTA

AUTOSTRADA A4/A5 - A5 TORINO QUINCINETTO
IVREA SANTHIA'

NODO IDRAULICO DI IVREA
2° FASE DI COMPLETAMENTO

PROGETTO DEFINITIVO

PARTE STRUTTURALE - SOVRAPPASSI E SOTTOPASSI
ADEGUAMENTO TEMPORANEO E DEMOLIZIONE
SOTTOVIA AL km 41+839
DISEGNO D'INSIEME

IL PROGETTISTA	REDATTO	CONTROLLATO	APPROVATO
	IGEAS E. De Curti	IGEAS M. Barale	ATIVA ENGINEERING V. Palmisano
DATA	GIUGNO 2012	REVISIONE	DATA
SCALA	1:200		
UPPRO	CONFERMA	IN PROG.	IN PROG.
SSP0101A0500PDSTR41600-			